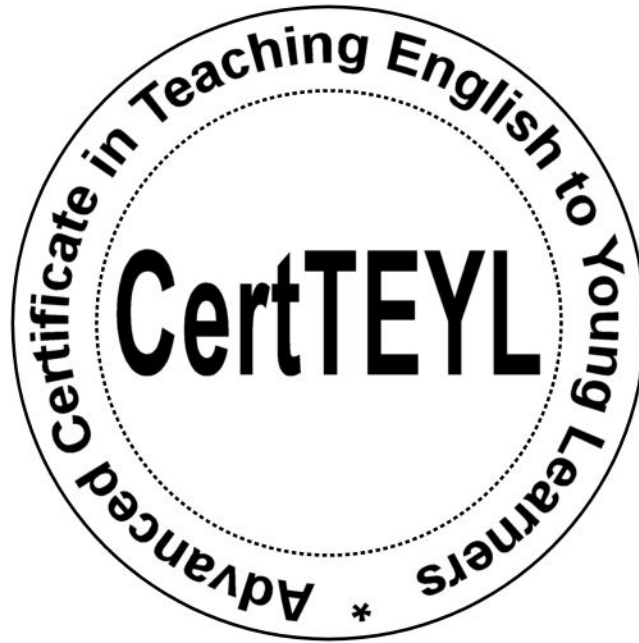


This “*Art Detective*” worksheet set is SPONSORED BY:



Great Value! Enroll NOW!

www.teyl.com



The “Mona Lisa”



The Mona Lisa (La Gioconda or La Joconde) is a half-length portrait of a woman by the Italian artist Leonardo da Vinci, which has been acclaimed as "the best known, the most visited, the most written about, the most sung about, the most parodied work of art in the world."

The painting, is in oil on a poplar panel, and is believed to have been painted between 1503 and 1506. It was acquired by King Francis I of France and is now the property of the French Republic.

[Source: wikipedia.org]

Now, as an “Art Detective” you are going to investigate this painting and its painter using the Internet.

Leonardo da Vinci was not just a painter. What else did he do?

1. He was an architect.

2. _____

3. _____

4. _____

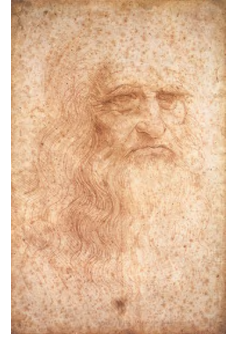
The “Mona Lisa” – Page 2

Leonardo da Vinci lived during the “Renaissance”.

Where was he born? _____

In what year was he born? _____

What was the “Renaissance”?



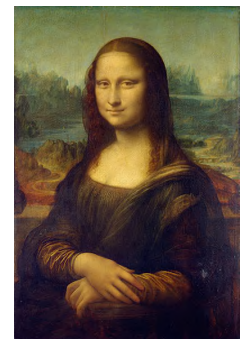
Da Vinci Self-Portrait

As the most famous painting in the world, you should be able to answer these three questions quite easily.

1. In what museum is this painting permanently displayed?

2. How much is the painting worth?

3. Who is this a painting of? Who is “Mona Lisa”?



The “Mona Lisa” – Page 3



These three questions are a bit more difficult!

Was the painting ever damaged? How?

Was the painting ever stolen? Who stole it?

Why is she smiling?

This should be an easy question.

Do you like the painting, the “Mona Lisa”?
